

ABBYY® FlexiCapture 9.0

How to update to Release 3 from FlexiCapture 9.0 prior Releases

Product:	FlexiCapture 9.0 Release 3
Release Date:	11.06.2010
Build Number:	Build 9.0.3.2438
Confidentiality:	ABBYY Europe and partners

Content

- How to update to Release 3 from FlexiCapture 9.0 Release 2** 1
- 1. UPDATE FROM FC9 RELEASE 1 OR 2 TO THIS RELEASE..... 2
 - 1.1 UPDATE FROM STANDALONE, DISTRIBUTED AND SERVER TO RELEASE 3..... 2
 - 1.1.1 What to do before starting the Update..... 2
 - 1.1.2 During installation..... 2
 - 1.1.3 External components..... 2
 - 1.1.4 Database update 3
 - 2. (REMOTE) SCANNING AND (REMOTE) DATA VERIFICATION STATION INSTALLER 3
 - 3. LICENSE USAGE 4

ABBYY® FlexiCapture 9.0

1. UPDATE FROM FC9 RELEASE 1 OR 2 TO THIS RELEASE

For **automatic updating** described in section 1 please check if you installed:

FlexiCapture 9.0 Release 1
Part-Number: #538-3
Build: 9.0.0.2149

FlexiCapture 9.0 Release 2
Part-Number: #538-4 or #538-5
Build: 9.0.0.2281 or 9.0.0.2335

To update to the new version, it is necessary to start installation of the new release. If a prior release was installed on the same computer, the installer will **detect it and update the program automatically** (uninstall the old version and install the new one in the same configuration).

You only may install the new Release 3 from the “Autorun menu”.

1.1 UPDATE FROM STANDALONE, DISTRIBUTED AND SERVER TO RELEASE 3

1.1.1 What to do before starting the Update

Before starting the update, it is recommended to stop the Processing Server and Processing Station using the Processing Server Monitor, and stop all the stations running on the computer on which the update will be done.

1.1.2 During installation

During installation you may get asked to close Processing Server and Protection Server. You can do that by stopping the relevant services: got to Control panel, Administrative tools and select the services section. You must stop ABBYY FlexiCapture Protection Server, FC Processing Server and FC Processing Station.

1.1.3 External components

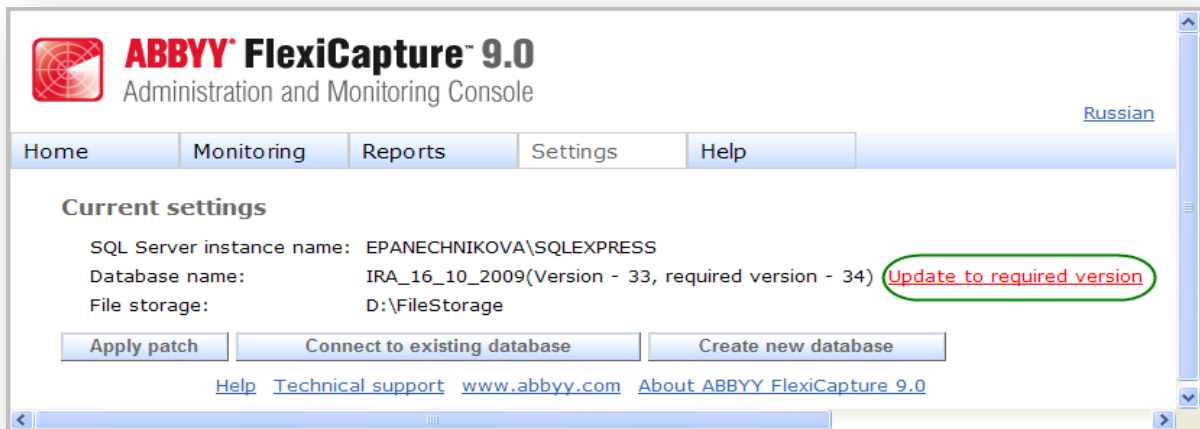
There is no need to re-install additional components (IIS, .NetFramework, SQL server, Crystal Reports). After the upgrade, you may only need to turn on the basic authentication in IIS again if it was used (for example, for remote stations). You can use the same Database and the same File Storage.

ABBYY® FlexiCapture 9.0

1.1.4 Database update

If you have business critical data stored in your database, please make sure that you have made a backup of all relevant data.

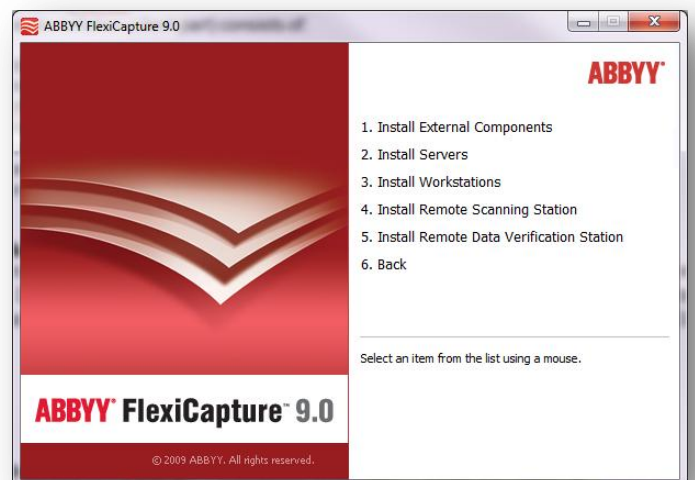
To update your Database, click the link “Update to required version” on the Administration and Monitoring Console (Settings > Application Server):



Please note that projects opened in the new version cannot be opened in previous versions. **Known issue:** for correct work all Batch Types created in previous version must be re-saved.

2. (REMOTE) SCANNING AND (REMOTE) DATA VERIFICATION STATION INSTALLER

An independent installer is available for the Remote Scanning Station. Select the Distributed Installation and then the **Install Remote Scanning Station** item (4. Plus 5. See on the right) in the Autorun, or run Setup.exe for Scanning Station. The Scanning Station installed using a separate installer can work in remote mode. If you need a local Scanning Station, which will work in the same domain with other servers and stations, use common installer for stations (Autorun > Distributed Installation > Install Workstations). The quantity of local Scanning Stations is indicated in FlexiCapture 9.0 Serial number.



3. LICENSE USAGE

FlexiCapture 9.0 Release 3 work with the same license generated for Release 1. There is no need to update or obtain a newly generated license for Release 2.